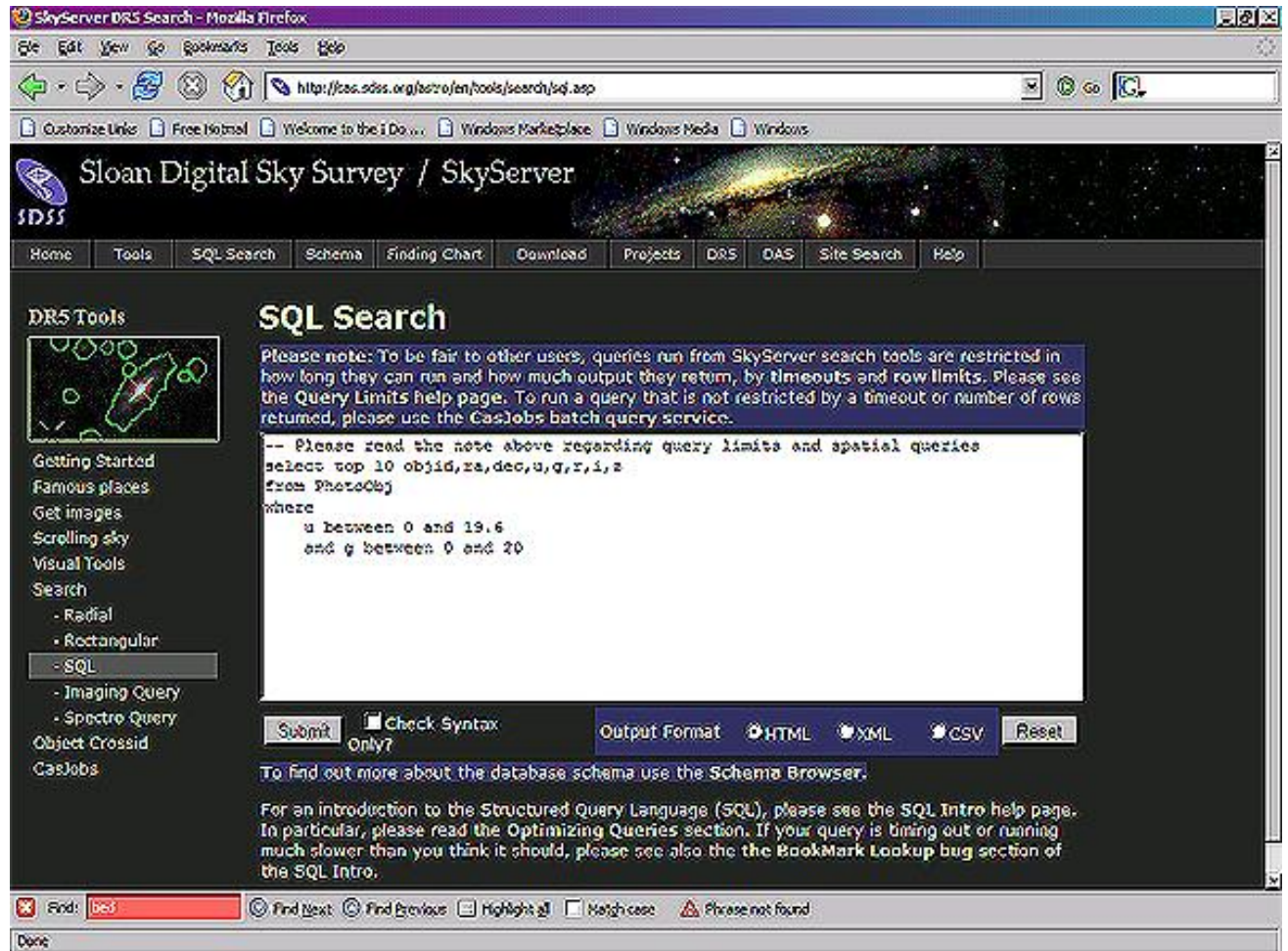


How Do I...

Get a random 1% (or x%) subset of the SDSS data?

The SDSS catalog dataset is 3.6 terabytes. But you can easily get a subset of the data by running an SQL query.

1. From the astronomers' main page, click on the SQL Search link – the second link in the first column. The page looks like this:



2. In the main window, type the following query:

```
SELECT u, g, r, i, z FROM Galaxy WHERE htmid*37 & 0x000000000000FFFF < (650 * 1)
```

3. The query will return a 1% subset of the data. To return a different percentage subset of the data, change the final 1 to a different number (for example, for a 0.5% subset of the data, change it to 0.5).
4. The query will return the magnitudes of a 1% subset of the data. You can also return other data, such as positions and object IDs.

5. If you're interested, the query finds the random points by using SkyServer's Hierarchical Triangular Mesh, multiplied by a prime number. For more about the Hierarchical Triangular Mesh, see <http://www.skyserver.org/HTM/>.